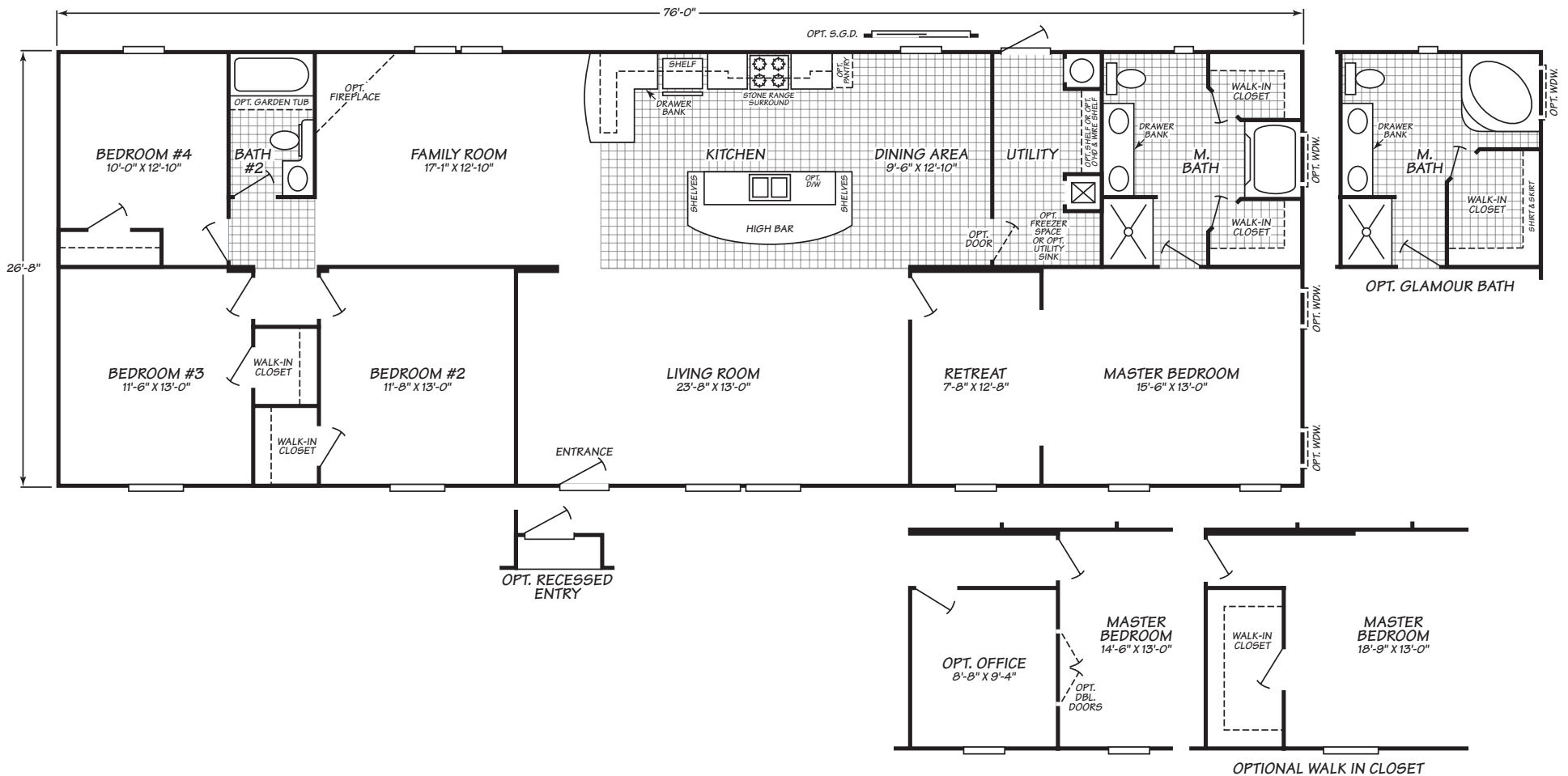


Eagle Series Model 4764X
4 Bedrooms • 2 Baths • 2,026 Square Feet



Windows shown reflect standard aluminum windows. Selection of optional thermal pane (vinyl) windows may affect the size and number of windows.

Fleetwood Homes reserves the right to change colors, prices, specifications, models, dimensions and materials without notice. Rendering and diagrams are meant to be representative and, in keeping with Fleetwood's policy of constant updating and improvement, may vary from the actual home. All dimensions are nominal and approximated. Square footage is measured from exterior wall to exterior wall, and is an approximate figure. Length indicated in floorplans is floor length only. The length of the hitch is not included. (Add four feet to arrive at transportable length.) Ask your retailer for specifics. PRICES AND SPECIFICATIONS SUBJECT TO CHANGE WITHOUT NOTICE OR OBLIGATION.

Interior

All Receptacles and Light Switches Nailed to Studs Ensures all receptacles are securely attached and will not come out of the wall when power cords are pulled out

Vaulted Ceilings Throughout Creates spacious rooms and enhances custom home look

30" Embossed Six Panel White Interior Doors with Nickel Hardware Contemporary & stylish with easy to use fixtures, creates a designer home look

Floor Mounted Door Stops Prevent damage to walls with low-profile floor mounted stops

Decorative Glass Light Fixtures Durable and attractive, adds an appealing detail to room lighting

Framed Cabinet Doors with Nickel Finish Drawer Pulls Long-lasting and beautiful with contemporary finish hardware, enriches the appearance of kitchen cabinets

Rebond Carpet Pad Heavy-duty pad extends life of carpet

Tackless Carpet in All Living Areas High performance, tackless, and long wearing

Ventilated Vinyl Coated Closet Shelving Keep clothing and personal items organized with easy to clean shelving

Exterior

OSB Tongue and Groove Floor Decking Provides a strong, durable floor for your home – same material used in site built homes

2X4" Exterior Wall Frames, 16" on Center Superior structural strength – the standard in residential construction

2"x8" Floor joists, 19.2" on center (16' and 32' homes) Stable, strong foundation for home structure

4/12 Roof Pitch Greater pitch projects a custom home look

Floor Decking Glued & Mechanically Fastened To Floor Joists Structurally strong, maximum stability, helps eliminate floor squeaks

38X80" Metal Exterior Door with Deadbolt & Storm Door Greater security & protection from the weather

2X6" Floor Joists, 19.2" on Center (14', 24', and 28' Homes) Stable, strong foundation for home structure and furnishings

Exterior GFI Weather Protected Receptacle Convenient power access for outdoor tools and yard care

Bath

54" Garden Tub / Shower Combination Provides a larger space to bathe in

Tub Valence Includes a pre hung shower curtain with an aesthetically pleasing drape valence

Laminate Countertops Long-lasting, attractive, and easy to clean

Porcelain Water Saver Toilets Durable and fashionable, water saver feature helps save on utility bills

Power Exhaust Fans in All Baths Help to minimize moisture build-up

Banjo Countertop Extended counter space

Congoleum Linoleum Flooring in all Baths Provides a moisture safe flooring that is easy to clean

Kitchen

Whirlpool® Appliances Quality, dependability, and style—all backed by the Whirlpool warranty

30" Overhead Cabinets Convenient, accessible storage with lined adjustable shelves for kitchen equipment & supplies

Hidden Cabinet Door Hinges Concealed hinges create a clean, uncluttered look for cabinets

Stainless Steel Kitchen Sink Durable, stain resistant sink is chip proof with easy to use lever faucet

Drawer Bank Handy storage for most often used kitchen tools

Single Lever Metal Kitchen Faucet A sturdier more convenient faucet

Receptacle with Ground Fault Interrupter Provides safer working conditions for you in your Kitchen and Baths

Utilities, Safety & Energy

200 Amp Electrical Panel Box Designed and installed for safety, easy access and ample household capacity

R14/R11/R11 Insulation Roof, exterior wall, and under-home insulation keeps home comfortable and helps lower utility bills

Removable Hitch Convenient and improves home appearance

Smoke Detectors with Battery Back-Up Protect every resident from fire danger and potentially get lower insurance rates

Pop-Up Shut-Off Valves Throughout Home Allows you to easily turn off water to specific locations of your home, without turning water off to the entire home

30 Gallon Dual Element Water Heater Abundant hot water supply for laundry, bath, and kitchen

Whole House Ventilation System Allows you to pull moisture from utility area and provide fresh air for your home

A/C Ready Thermostat Allows for easy A/C installation that saves you money

Washer and Dryer Ready Allows for easy installation of washer and dryer

Options

Glamour Bath Package (Most Homes) The ultimate luxury-includes a deep bathtub, separate 48" shower, double sinks, deluxe lighting, and additional storage

Black Kitchen Appliances Modern looking appliances that are easy to clean

Ceiling Fan Improve air circulation to stay warmer in winter and cooler in summer

Deluxe Carpet Upgrade Luxurious, heavier weight carpet in designer colors, meets all FHA specifications

Fiberglass Bathtub & Shower in Guest Bath Durable, attractive, and easy to clean

Sliding Glass Doors Fill rooms with dramatic natural light and open up views

Smartpanel&Trade; Siding Durable and trusted brand upgrades home appearance

Steel Front Door with Half-Moon Glass Insert Residential look with more security

2" Blinds Durable, easy-to-maintain blinds with a clean contemporary look

Lined Overhead Cabinets with Adjustable Shelves More aesthetically pleasing and adjustable shelf creates additional cabinet space